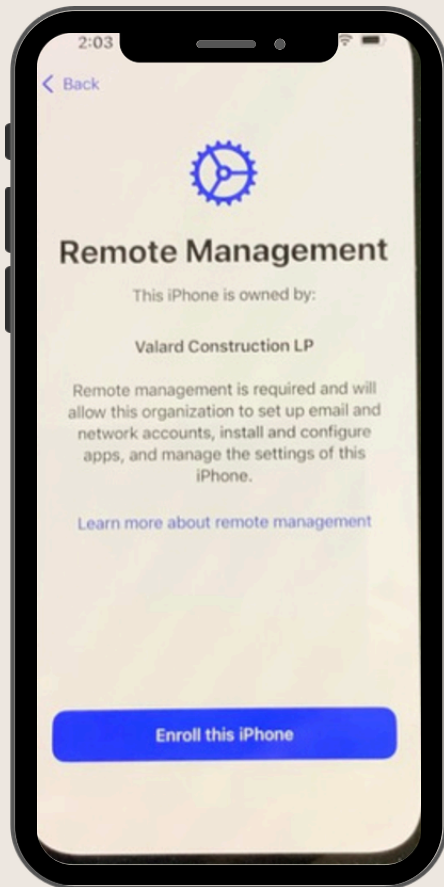
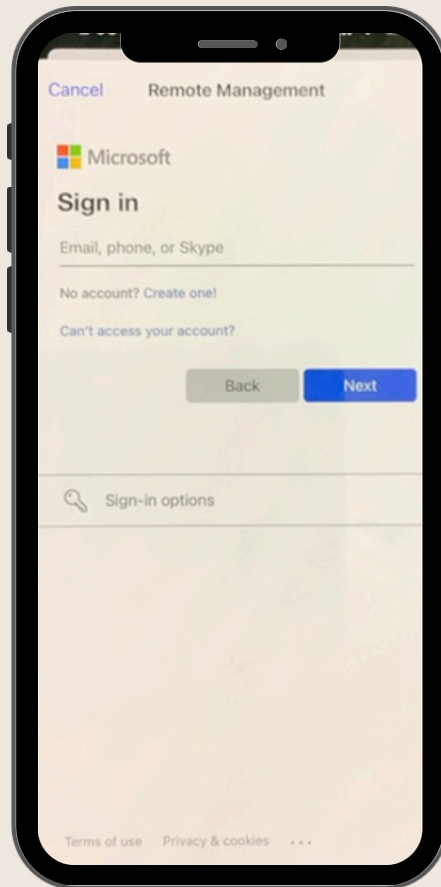


VALARD EMAIL SET UP



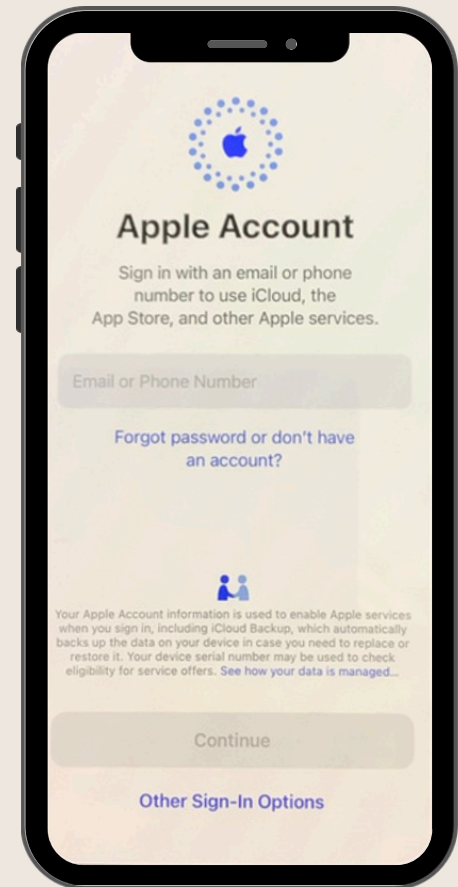
STEP - 1

Tap Enroll this iPhone to proceed with Remote Management setup.



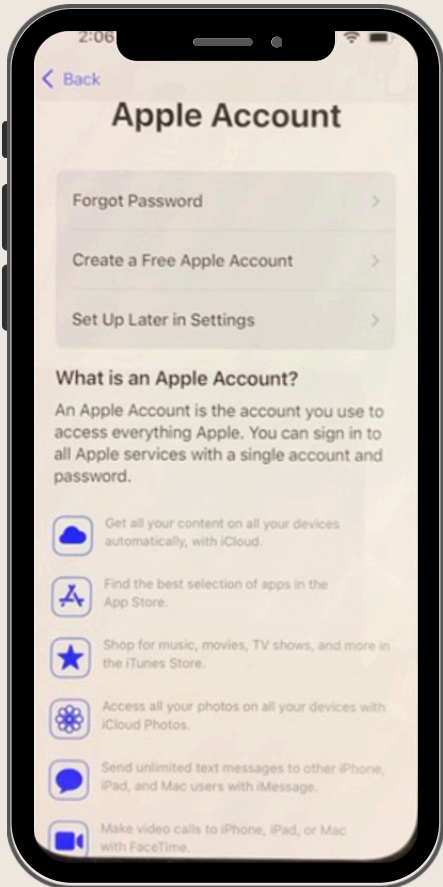
STEP - 2

Enter your workemail address and password to continue signing in.



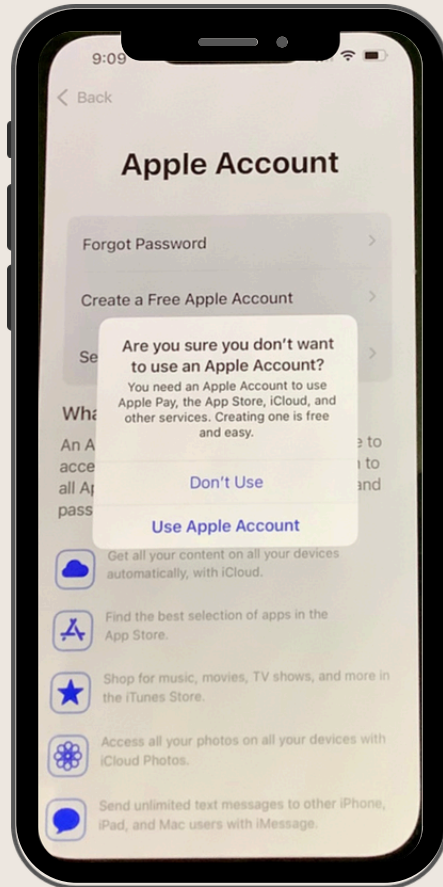
STEP - 3

This screen prompts for an Apple ID; for corporate-managed devices, click on forgot password option



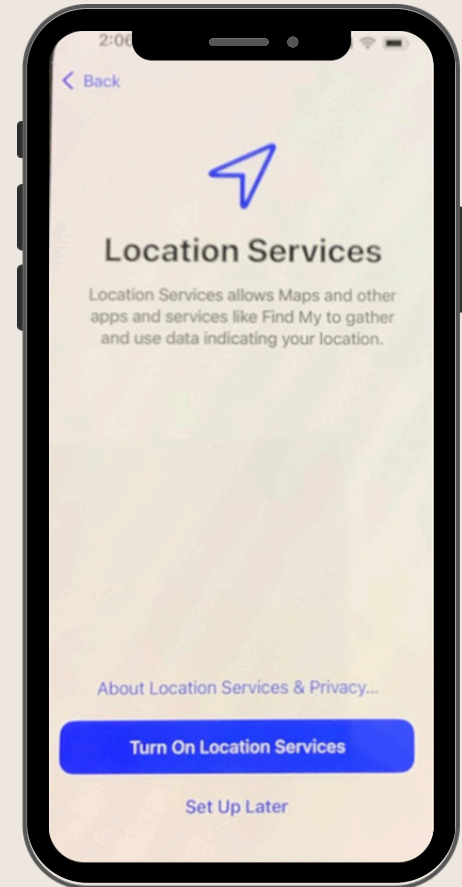
STEP - 4

Please skip the Apple ID setup for now by selecting Set Up Later in Settings.



STEP - 5

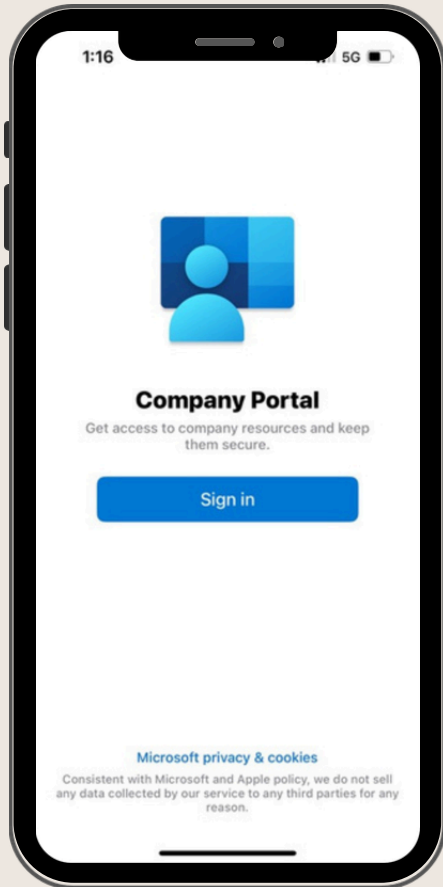
Select Don't Use to confirm skipping the Apple ID setup.



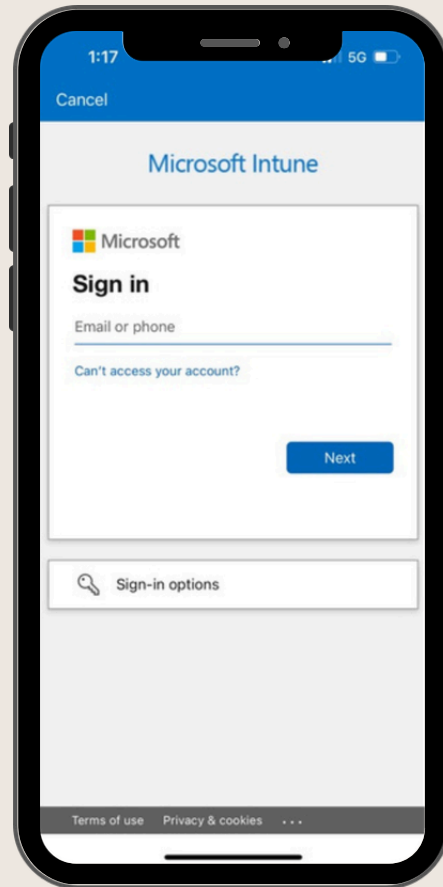
STEP - 6

Tap Turn on Location Services to enable location features on the device.

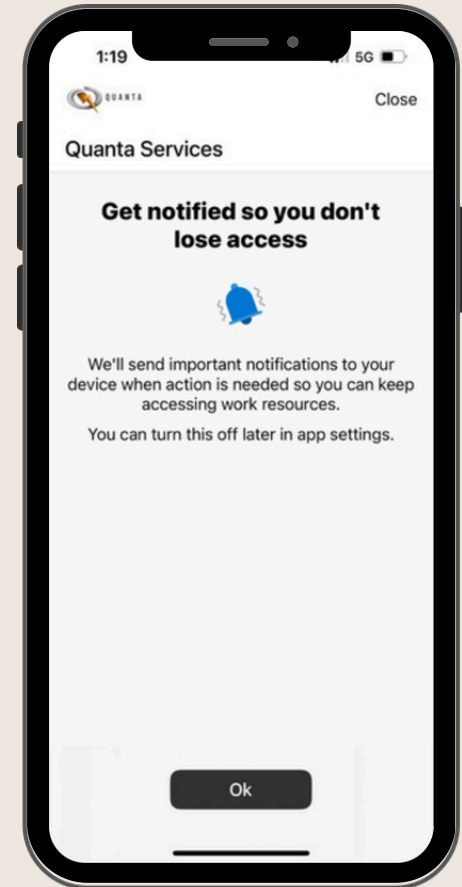
Note: If you encounter issue, please activate the esim after enrollment. Do this by going to Settings > Cellular > activate esim.



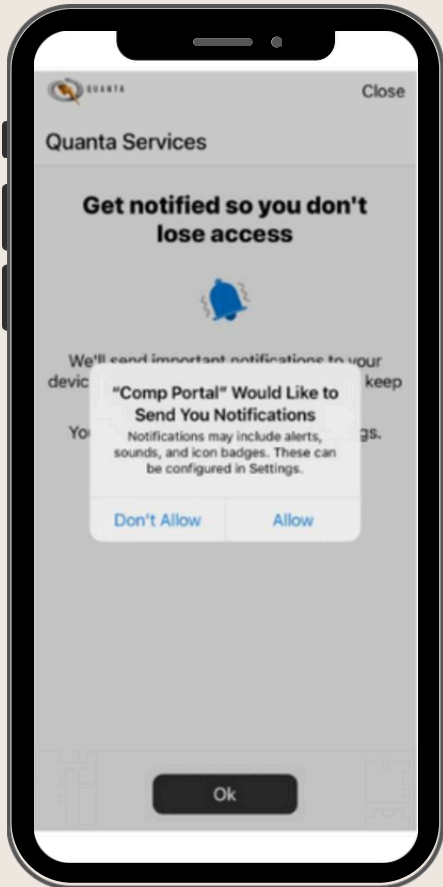
STEP - 7
Open the Comp Portal app and tap Sign in to start configurations.



STEP - 8
Enter
<username>@quantaservices.com and your current company password to continue

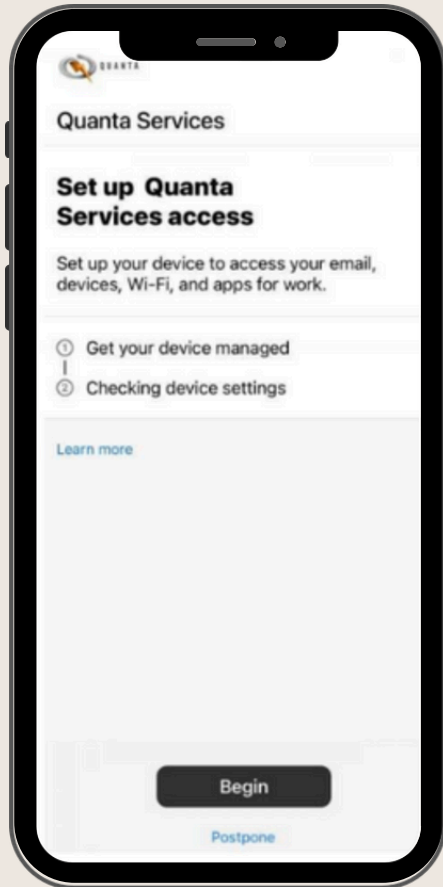


STEP - 9
After signing in, tap OK to allow notifications in the Company Portal app.



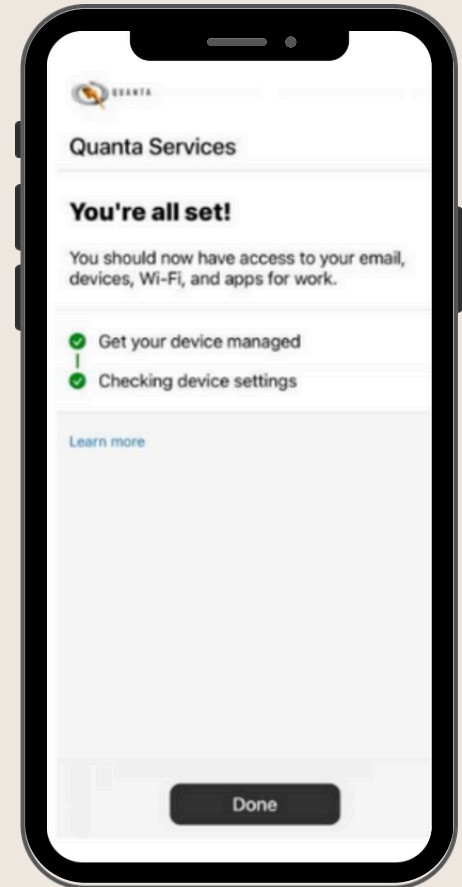
STEP - 10

Tap Allow and continue



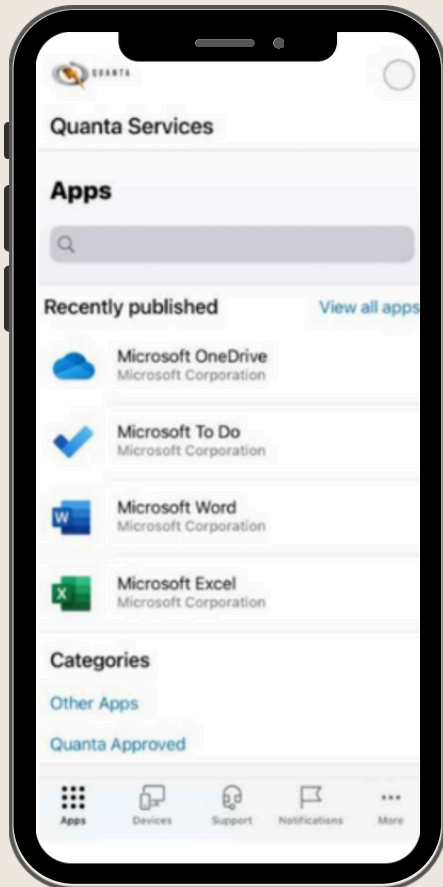
STEP - 11

Tap Begin to proceed with the company configurations that download to the device



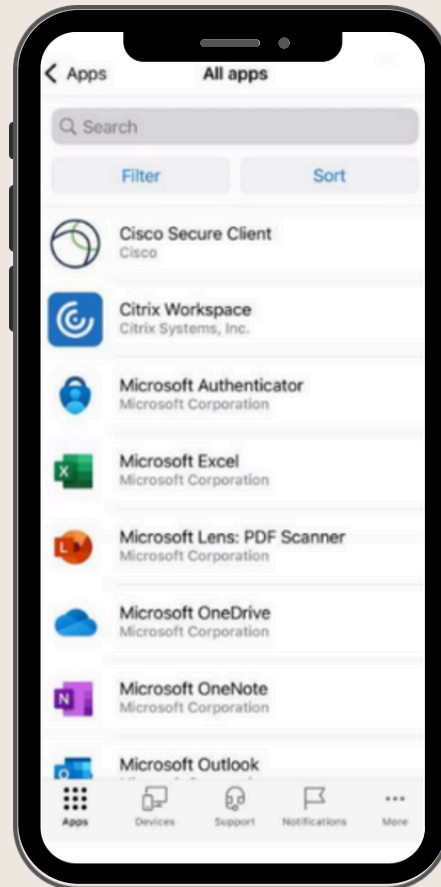
STEP - 12

Tap Done once the green checkmarks show.



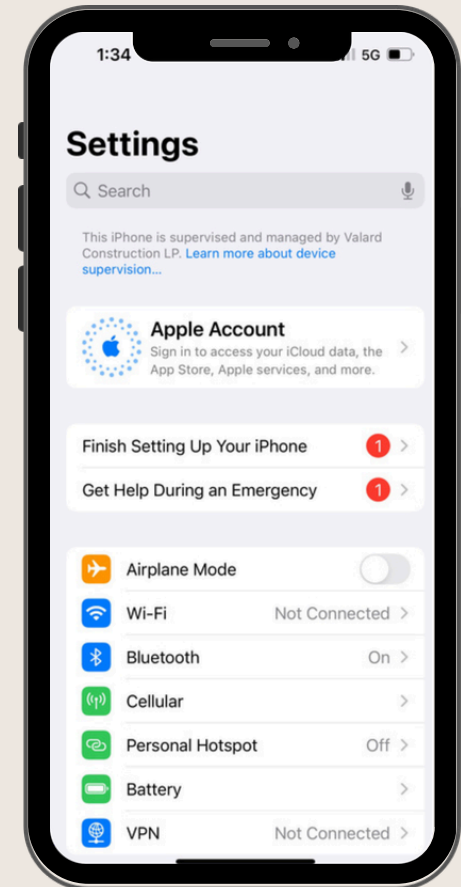
STEP - 13

Access the Quanta Managed Apps Library – Apps screen, view the list of Quanta-approved applications.



STEP - 14

The Quanta approved apps can be downloaded directly from here without needing to go into the Apple App Store.

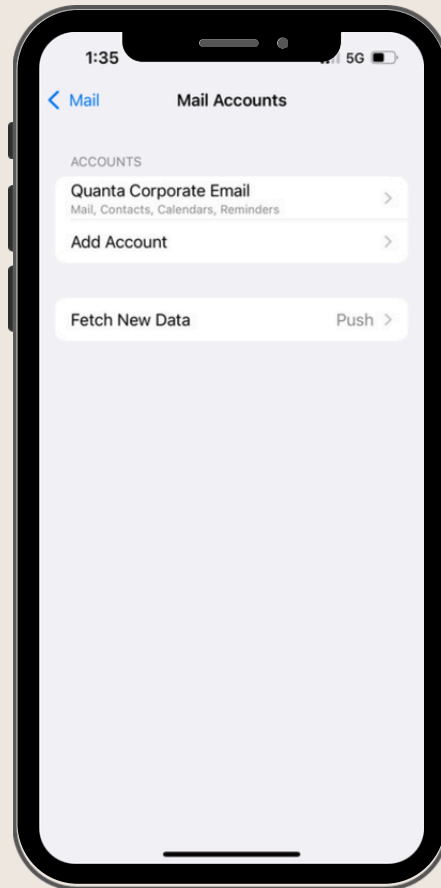


STEP - 15

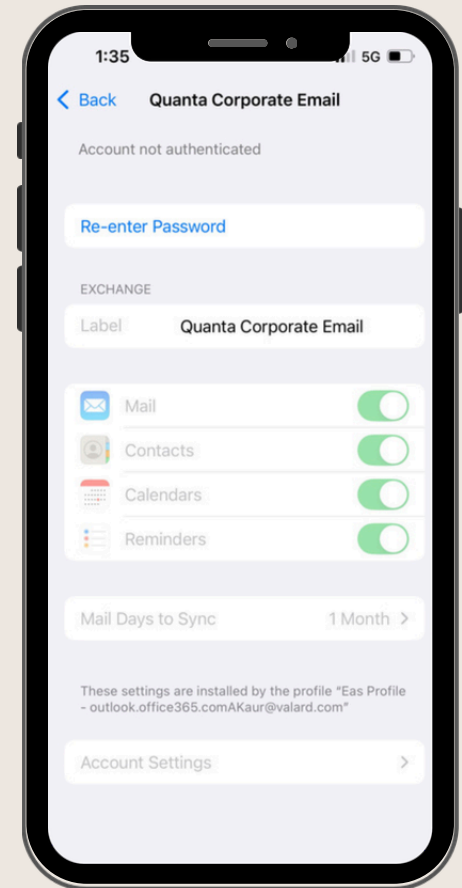
IntuneCompany Portal configurations have been completed. Please proceed to work email. Select Mail option from settings.



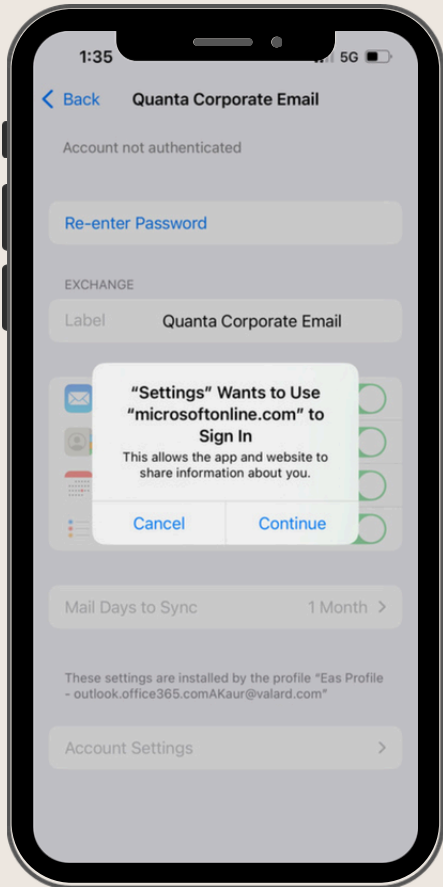
STEP - 16
Open the Settings app and tap on the Mail option. And tap on Accounts.



STEP - 17
Tap on Quanta Corporate Email.

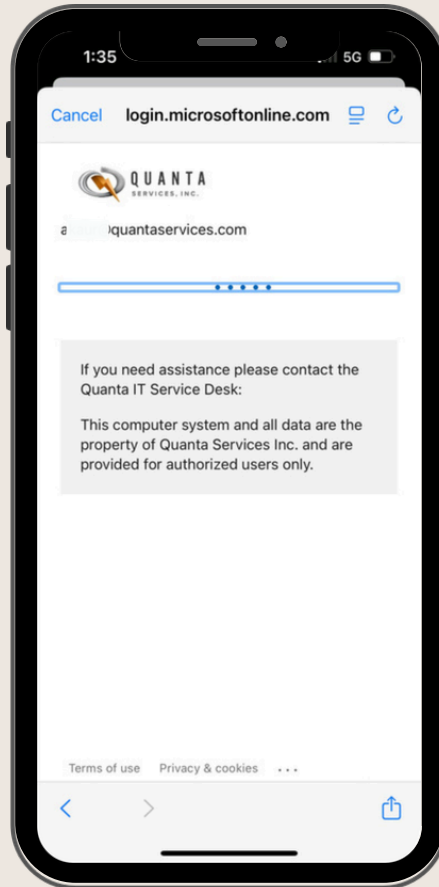


STEP - 18
Tap Re-enter Password. to enter <username>@quantaservices.com and your current company password to continue



STEP - 19

Multifactor Authentication will activate during sign in.



STEP - 20

Work emails will be accessible from the Apple Mail app upon successful sign in and MFA verification